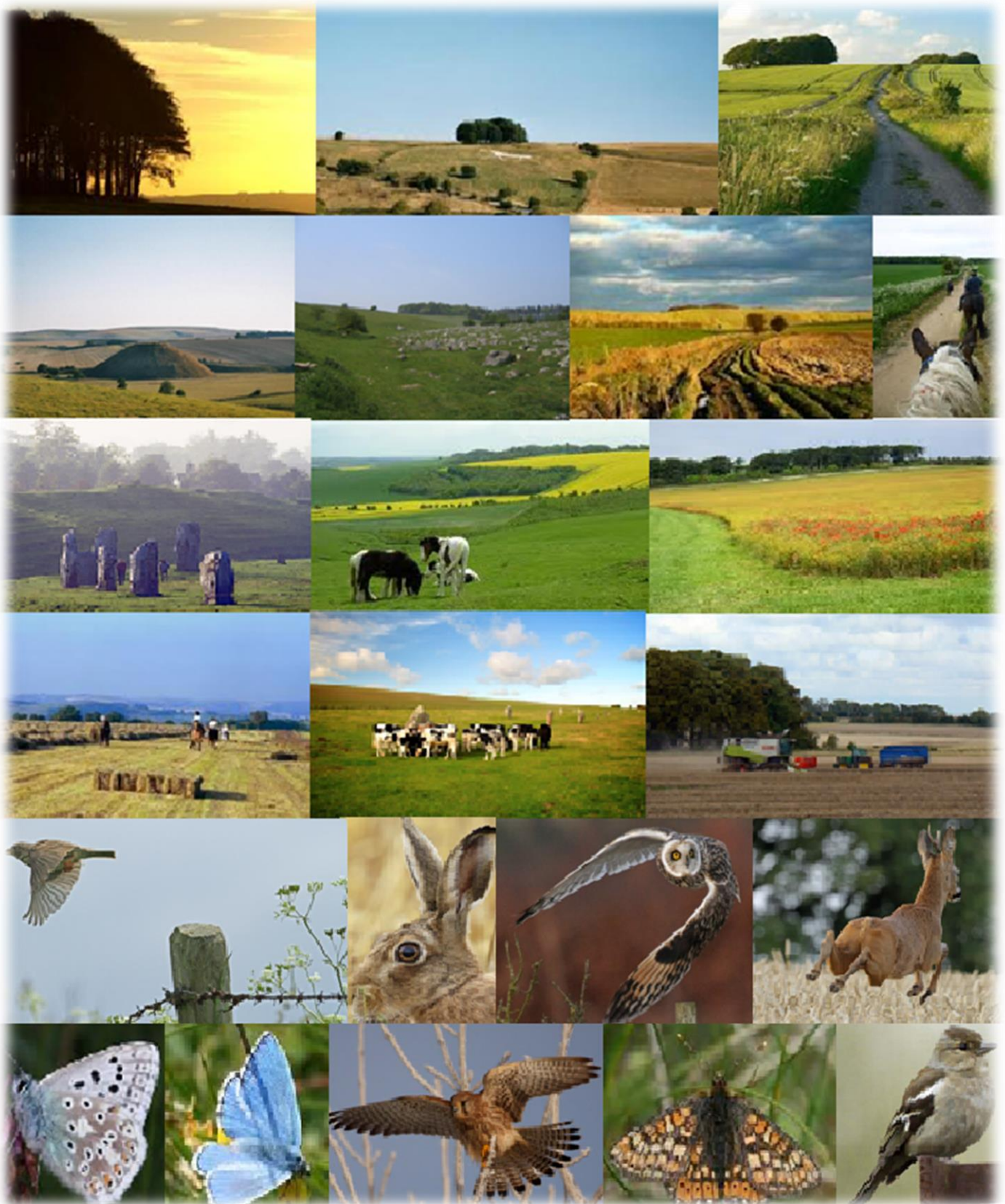
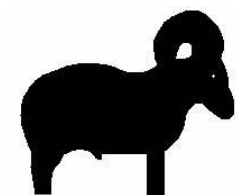


# The Marlborough Downs: Space for Nature



Eleventh Annual Report



Dr Jemma Batten  
Marlborough Downs Space for Nature Project Manager  
Arnolds Hill Farm Cottage  
Arnolds Hill – Wingfield – Trowbridge – Wiltshire BA14 9LD

☎ 07855 506112

✉ [jemma.batten@blacksheepcountryside.co.uk](mailto:jemma.batten@blacksheepcountryside.co.uk)



**The Marlborough Downs  
Nature Enhancement Farming Ltd**  
(A company limited by guarantee)

Report and Unaudited Financial Statements  
for the year to 31st March 2023

Company Number : 7907437  
Registered Charity Number : 1147925

# **The Marlborough Downs Nature Enhancement Farming Ltd.**

(A company limited by guarantee)

The trustee board presents its directors' report and unaudited financial statements for year to 31 March 2023.

## **ADMINISTRATIVE DETAILS OF THE CHARITY, ITS TRUSTEES AND ADVISERS**

Company Registered No : 7907437

Charity Registered No : 1147925

Principal Address: Arnolds Hill Farm Cottage, Arnolds Hill, Wingfield, Trowbridge, Wiltshire BA14 9LD

Registered address: Arnolds Hill Farm Cottage, Arnolds Hill, Wingfield, Trowbridge, Wiltshire BA14 9LD

Trustees that served during the period:

- Christopher Musgrave – Chair
- Marcus Robert Cooper
- Robin Butler
- Gillian Carter
- Peter Lawson
- Victoria Lowes
- Piers Maynard
- Matthew Moore

Project Management: Black Sheep Countryside Management – Lead Dr Jemma Batten

### **Independent Examiner**

Helen Frost, HF Bookkeeping Plus, 1 Forest Hill Cottages, Marlborough, Wiltshire SN8 3HN

### **Bank**

Barclays Bath Branch, 4-5 Southgate Street, Bath BA1 1AQ

# The Marlborough Downs Nature Enhancement Farming Ltd.

(A company limited by guarantee)

## REPORT OF THE TRUSTEE BOARD

### 1. Chairman's Introduction

The group has now been together for almost twelve years and we've done a lot, first with NIA funding, then with various grants from the Science Museum, FiPL, Thames Water, the North Wessex Downs Sustainable Development Fund, as well as donations from the Kilcreggan and ByBook Trusts, not to mention, of course, subscriptions from members and ad hoc donations from other supporters. However, we are now at the stage where our financial situation demands that we review the future of the partnership so that we can decide how we want to take things forward.

Covid lockdowns and restrictions had a big impact on everyone's life, and the group suffered from not being able to get together for workshops, visits and other activities. Post Covid, engagement hasn't really picked up and we've had to cancel several events due to poor uptake or last minute drop outs.

FiPL funding has meant that one area that has grown since Covid has been the community and outreach programme led by Janinka. This funding will come to an end in March 2024, and Janinka has given notice that she will be moving on to something new at that point. We have always had an active outreach programme, of which we should be very proud, but it was intended as a showcase for the work the Partnership is doing to support the landscape and wildlife of the Downs, and with the recent lack of group activity, it's difficult to justify the work that would be required to apply for further funding and deliver a new outreach programme.

This group was set up to be farmer-led, and was ground-breaking in that context back in 2011. However, without more input, support and engagement from the members, it's difficult to envisage how it might continue in its current form. The board is therefore now in the process of consulting with the membership to find out how they would like to take the group forwards, and we very much hope that we will continue to function in some form for many years to come.

Chris Musgrave  
Chair

## **2. Structure, governance and management**

### **Governing Document**

The organisation is a charitable company limited by guarantee, incorporated on 12 January 2012 in preparation for the potential success of a bid application submitted to Natural England, which was then awarded on March 2012, and registered as a charity on 3 July 2012. The company was established as 'The Marlborough Downs NIA' under a standard Memorandum of Association which established the objects and powers of the charitable company and is governed under its Articles of Association. In the event of the company being wound up members are required to contribute an amount not exceeding £10. On 16th December 2015 the Charitable Company was renamed as 'The Marlborough Downs Nature Enhancement Farming'.

### **Organisational Structure**

The Marlborough Downs Nature Enhancement Farming charity has a board made up of farming and non-farming trustees and invited associates. Chris Musgrave is the chair of the charity board. The board delegates operational activities to two delivery groups: the Biodiversity and Landscape Group and the Community Outreach Group.

Projects are a collaboration between the farmers of the Marlborough Downs (who are members of the Marlborough Downs Nature Enhancement Farming charity), Black Sheep Countryside Management (responsible for project delivery), and various other stakeholders. Board meetings are run as project board meetings and for this purposes representatives from non-farming members and partner organisations have been co-opted to the board. They are:

- Victoria Lowes, Piers Maynard and Christopher Musgrave, Associate Member representatives
- Jemma Batten, Senior Consultant, Black Sheep Countryside Management

Other key stakeholders may be invited to attend board meetings from time to time. All strategic decisions are taken at these properly constituted project board meetings. All agenda items are supported by board papers, which include a risk analysis and clear recommendations to be discussed and considered. The decisions are clearly minuted and these minutes with actions are circulated and made available to all members via the website.

### **Recruitment & Training**

This is the eleventh year of the charity and this report covers the year ended 31st March 2023. The charity continues with the same overall aim as in previous years. All bar one of the trustees are currently or have previously been farmers and represent the farming community in the Marlborough Downs area. Some have been on the board from the start of the charity and others have joined since. At the 2018 AGM it was agreed that non-farmer associate members should also be allowed to vote and to stand as trustees as long as the majority of the board remains as farmer members. No new trustees were appointed in the year to 31st March 2023.

The skills of the project board and their advisers are considered to be appropriate for the requirements of the charity's objectives and have been able to meet the ever increasing challenging project targets over the year. Trustees are offered training to fill any further gaps identified and if required additional trustees with new skills would be recruited.

### **3. Financial Review**

The majority of this year's income was derived from a Farming in Protected Landscapes grant for community events and outreach activities. Additional income has been generated through

- Fundraising events including Open Farm Sunday
- Subscriptions from farmer members
- One-off donations

| <b>Activities</b> | <b>Income</b>  | <b>Spend</b>   | <b>Under/over-spend</b> |
|-------------------|----------------|----------------|-------------------------|
| Community         | £18,910        | £17,866        | £1,044                  |
| Landscape         | £1,921         | £8,400         | (£6,479)                |
| Overheads         | £4,846         | £7,153         | (£2,307)                |
| <b>Total</b>      | <b>£25,677</b> | <b>£33,419</b> | <b>(£7,742)</b>         |

Please note: All figures are rounded to the nearest £1. Numbers in brackets are negative, ie overspend.

£49,376 of restricted funding was brought forward (Landscape).

### **Reserves Policy**

The policy on reserves is accepted as being minimal as offices are virtual and all work is undertaken by volunteers or contractors. Generally, a reserve of £4,000 for unforeseen events is considered adequate as this could cover half a year's management costs in an emergency. As of 31 March 2023 we had £2,057 unrestricted funds in reserve which is not considered adequate, hence the decision to review the future of the organisation.

## **Donations In Kind**

In addition to the actual management of the budget, the charity benefits from items and services donated as 'in kind'. As in previous years, much of this has been in the form of pro bono staff time to support the project, donated items including seed, habitat management activities, and free venue and facility use. Volunteer time accounted for a high proportion of activities undertaken including project management time. However, the majority of this was not recorded due to the lack of reporting and paid support time to record and collate.

## **4. Funds held as custodian trustee on behalf of others**

The trustees act as custodians and ultimately the controlling group of the funds held. This was limited during the year as explained above. Otherwise, no funds are held on behalf of others.

## **5. Public benefit statement**

The Marlborough Downs Nature Enhancement Farmers Ltd and Charity aims to deliver a more biodiverse, more attractive and more accessible landscape. Alongside these obvious, tangible benefits come a suite of gains that may be more difficult to quantify but are known collectively as ecosystem services. Such gains include improved water quality due to reduced agricultural inputs; a contribution towards the physical and mental health of residents and visitors through access to green spaces and fresh air; mitigation against climate change through building robust ecological networks; better crop pollination; support for a strong rural economy via agriculture, tourism and recreation; and the social, cultural and educational benefits that are a result of interaction with nature.

The partnership is driven by the fact that despite decades of conservation effort, many of our habitats and species are at best stable and at worst in decline and while most of the farmers in the area have long been involved in environmental schemes, we have shown that the farmer-led, bottom-up approach of this initiative can lead to far greater and more wide-reaching benefits as a result of the 'ownership' conferred on us by this project. We are also convinced that the potential for the long term delivery of this project is far higher than for others that rely upon financial incentives rather than personal commitment. We understand that a landscape-scale approach cannot succeed without widespread farmer involvement and we ensured that all farmers in the area had the opportunity to contribute to the development of the project.

As well as environmental and conservation benefits there is an emphasis on education of the public through volunteer activities to support the project as well as direct educational activities provided by the project. These activities are community based and work with existing groups so also promote community working and cohesion as groups and individuals are brought together with a common



aim. We are working with local communities to encourage more involvement in the countryside and to promote greater awareness of landscape, wildlife and farming. We are keen to enthuse people about the countryside and get the non-farming community involved with activities on and about the Downs through events and activities, workshops and work parties. We are working to provide better public access and information to encourage people to enjoy and understand the landscape while improving their health and wellbeing.

## **6. Objectives and activities**

The objectives as laid out for the Company in the initial incorporation document were:

- To promote for the benefit of the public the conservation, protection and improvement of the physical and natural environment.
- To advance the education of the public in the conservation, protection and improvement of the environment.
- To promote sustainable development for the benefit of the public by the preservation, conservation and the protection of the environment and the prudent use of resources.
- The promotion of sustainable means of achieving economic growth and regeneration.

## 7. Achievements and performance Year 11 (April 2022 to March 2023)

| Month | Meetings |                | Funding applications   | Date and event   | Venue (and number attending)                  |
|-------|----------|----------------|--|--|---|
|       | Board    | Delivery Group |  |  |   |
| Apr   | ✓        |                | Countryside Stewardship  | 21 <sup>st</sup> Bird feeder crafts  | Fiddlers Hill (20)                            |
| May   |          | COG B&L        |  | 14 <sup>th</sup> Dawn Chorus   | Berwick Bassett (36)                          |
|       |          |                |  | 11 <sup>th</sup> Spring Celebration  | Avebury Social Club (20)                      |
|       |          |                |  | 18 <sup>th</sup> Soilmentor training   | Weir Farm (9)                                 |
| Jun   |          |                |  | 2 <sup>nd</sup> Jubilee Beacon   | SfN Reserve (100+)                            |
|       |          |                |  | 6 <sup>th</sup> Tree sparrows  | Manor Farm, Berwick Bassett (7)               |
|       |          |                |  | 12 <sup>th</sup> Open Farm Sunday  | East Farm (500+)                              |
|       |          |                |  | 24 <sup>th</sup> Farm walk & picnic  | Parsonage Farm (34)                           |
| Jul   | ✓        |                |  | 12 <sup>th</sup> Volunteer event   | SfN Reserve (26)                              |
|       |          |                |  | 16 <sup>th</sup> Butterfly Walk  | SfN Reserve (18)                              |
| Aug   |          | COG            |  | 2 <sup>nd</sup> , 9 <sup>th</sup> , 16 <sup>th</sup> , 23 <sup>rd</sup> & 30 <sup>th</sup> School holiday events | Various (64)                                  |
|       |          |                |  | 6 <sup>th</sup> Permaculture Group   | Manor Farm, Berwick Bassett and East Farm (9) |
|       |          |                | 23 <sup>rd</sup> Ukrainian tea party                                 | SfN Reserve (51)   |   |
| Oct   | ✓        |                | 7 <sup>th</sup> Bat walk   | Avebury (20)   |   |
|       |          |                | 24 <sup>th</sup> , 26 <sup>th</sup> , 28 <sup>th</sup> Night safaris | Various (12)   |   |
|       |          |                | 27 <sup>th</sup> Hibernation & Migration                             | SfN Reserve (23)   |   |
| Nov   |          |                | 3 <sup>rd</sup> Seasonal Supper                                      | Marlborough Golf Club (29)   |   |
|       |          |                | 19 <sup>th</sup> Willow wreaths                                      | Broad Hinton (22)  |   |
|       |          |                | 22 <sup>nd</sup> Soilmentor training                                 | Online (6)   |   |
| Dec   |          | COG            | 6 <sup>th</sup> Natural Capital Forum                                | Marlborough Golf Club (34)   |   |
|       |          |                | 14 <sup>th</sup> Weed control talk                                   | Online (12)  |   |
|       |          |                | 17 <sup>th</sup> Seasonal crafts                                     | East Farm (25)   |   |
| Jan   |          |                | 12 <sup>th</sup> Volunteer event                                     | Bay Bridges/Barbury Castle Estate (4)  |   |
|       |          |                | 29 <sup>th</sup> Volunteer event                                     | Maisey Farm (12)   |   |
| Feb   |          |                | 14 <sup>th</sup> Wood crafts   | SfN Reserve (30)   |   |
|       |          |                | 18 <sup>th</sup> Bird ringing for Kids                               | Bedwyn Common (14)   |   |
| Mar   |          |                | 12 <sup>th</sup> Spring Clean  | The Ridgeway (6)   |   |
|       |          |                | 18 <sup>th</sup> Willow wreaths                                      | Broad Hinton (17)  |   |

COG = Community and Outreach Group; B&L = Biodiversity and Landscape Group

More details can be found under the relevant objective headings that follow.

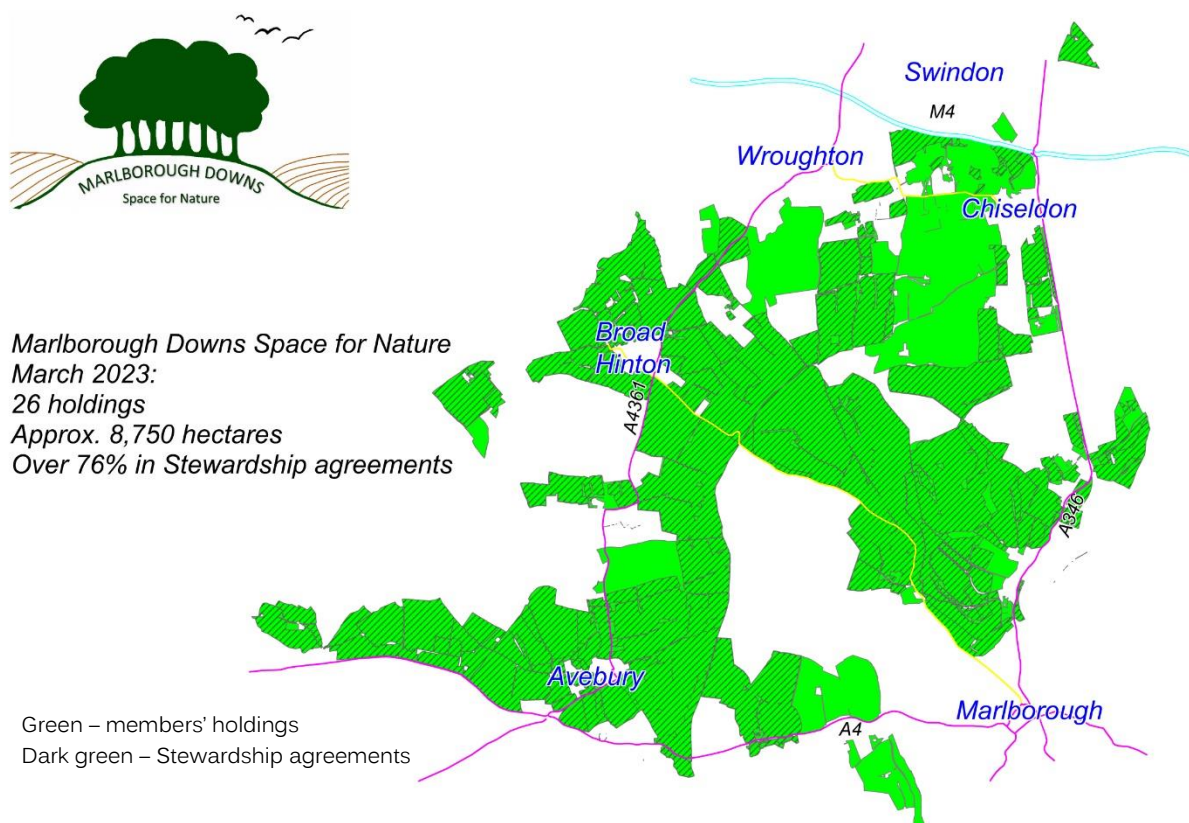
## OBJECTIVE 1 – To deliver evidence-based conservation activities on a landscape scale

### 1.1 Biodiversity tailoring

Detailed knowledge of what's happening beyond individual farm boundaries enables us to deliver on a landscape scale.

#### 1.1.1 Existing Stewardship agreements

The project management team continues to support members in their delivery of individual Environmental Stewardship (ES) and Countryside Stewardship (CS) agreements. At the beginning of 2023, these covered over 76% of the 8,768 hectares farmed by members which is significantly more than the national average (the most recent published figures (2020) indicate that just 20% of land in England was covered by an ES or CS agreement).



#### 1.1.2 New Stewardship agreements

Two higher and two mid tier applications were supported in 2023, all of which were successful. The resulting agreements include activities to create habitat for pollinators and farmland birds, manage hedgerows, species-rich and semi-improved grassland, protect archaeology, improve soil health, mitigate against diffuse pollution, preserve genetic diversity in traditional breed livestock, and deliver environmental education.

### **1.1.3 Dissemination of best practice**

The group registered for a Soilmentor account which enabled members, via a Smartphone app to record observations and photos, which are visualised to spot trends, refer to benchmarks and make comparisons. The package is designed to encourage groups of farmers to monitor soil health and biodiversity together, making it easy to see headline numbers, compare data and get tailored advice for different soil types. The initial response from members was positive, with representatives from eight holdings attending training on how to carry out and record the results of various tests to assess soil health and wildlife. Unfortunately though, the weather through late spring and summer was so dry that it was virtually impossible for individuals to replicate those tests on their farms. A refresher training session was offered in the autumn but cancelled due to lack of uptake, and an online session arranged to demonstrate data collation and comparison. However, by the end of the year's subscription, only a couple of members had uploaded any data so the account was allowed to lapse.

Members also received training on another app that can be used to upload and collate all the records that are required for Countryside Stewardship agreements. This is now being used to good effect by several members with multiple and/or complex agreements.

Our events and outreach co-ordinator has set up Space for Nature LIVE, an online library of behind-the-scenes footage of farming life and snippets of our diverse wildlife, linked to our social media accounts. This is aimed at encouraging members to share best practice via video clips and photos but so far participation has been minimal.

Other best practice events offered to members included an online talk by John Pawsey, organic farmer, on weed control in minimal and no tillage cultivation systems, and a trip to Pipers Farm in Devon (cancelled twice due to lack of uptake). More successful was a Natural Capital Forum, at which farmers heard from expert speakers on how to measure, monitor and monetise natural capital, including via biodiversity net gain, carbon markets, and other local schemes.

Additional 'best practice' activities associated with particular habitats and/or species are detailed under the relevant Objective headings below.

## **1.2 Supporting local conservation businesses**

We continue to have excellent relationships with many local businesses and other organisations involved in farming, conservation, land management, and other countryside activities, and communicate and collaborate on an *ad hoc* basis. For example, we collaborated with another local

charity, Action for the River Kennet, to create a new area of wetland, and have used local contractors, Wessex Woodland and James Vigor-Smith, to carry out establishment and maintenance work at the Space for Nature Reserve.

### 2.1 Restoring Resilient Ecosystems

We continue to contribute to the Restoring Resilient Ecosystems (RestREco) project, which is a collaboration between Cranfield University, UK Centre for Ecology & Hydrology, University of Stirling, National Trust and Forest Research. The aim is to determine the most efficient approaches to restore complex, multifunctional and resilient ecosystems, thus securing net environmental gain, and following on from last year's floral and invertebrate diversity surveys, CEH researchers have erected a rainfall exclusion shelter on one of the sites to explore the impact of drought on the flora and fauna of species-rich grassland. At the annual Seasonal Supper, members were given a comprehensive and fascinating summary of the initial flora and invertebrate survey results by Dr Ben Woodcock from CEH.

### 2.2 Wildlife corridors and stepping stones

#### 2.2.1 On-farm delivery

With over three-quarters of the land covered by the Space for Nature project in some kind of Stewardship agreement, it's not surprising that there's an immense amount going on across the Downs in terms of environmental activities. The focus is very much on providing habitat and foraging sites for wildlife, with grassland and hedgerow management, along with the provision of rough grass margins, plots of seed-bearing crops for farmland birds, and areas nectar-rich plants for invertebrates being most popular.

#### 2.2.2 Space for Nature Reserve

Major works on the Reserve were all more-or-less completed by the end of 2022 and the site now boasts a whole host of features including:

- Species-rich grassland
- Tree sparrow village
- Woodland and scrub
- Hedges
- Fruit trees
- Wildlife pond
- Chalk pit
- Bug hotel, bird, bat and invertebrate boxes
- Stumpery and log piles
- Wild bird mix
- Nectar mix
- Fallow plots
- Arable crops
- Tussocky grass margins

The Reserve has been put to good use, with several events being held there throughout the year during which the close proximity of the various habitats and structures have allowed us to demonstrate our work to visitors.

### **2.2.3 New wetland complex**

In partnership with Action for the River Kennet, we have created a wetland complex in an area close to parking and accessed via a public footpath. The site provides a series of pools of varying depths, extensive planting of wetland vegetation, and scrubby areas for farmland birds and terrestrial invertebrates. Although still in the early stages of establishment, the site's proximity to an adjacent Reserve belonging to the Wiltshire Wildlife Trust makes it an important element in the wider landscape.

## **OBJECTIVE 3 – To consolidate populations of species of national and local importance**

---

### **3.1 Space for Birds: Marlborough Downs farmland bird project**

Our volunteer farmland bird adviser, Matt Prior, of Wiltshire Ornithological Society, continues to coordinate our three-pronged approach to farmland bird conservation:

1. Year-round feeding opportunities for adults and spring/summer insect food for chicks
2. Nesting habitat
3. Protection from predators where predation significantly threatens breeding success

#### **3.1.1 Feeding and foraging habitat**

As in previous years, most of our members continue to provide overwinter stubbles, sown wild bird mixes and/or nectar mix plots via Stewardship agreements, and/or on a voluntary basis.

#### **3.1.2 Supplementary feeding**

Members continue to feed over 20 tonnes of seed annually to our farmland birds over winter, either scattered on the ground or through giant bird feeders purchased by the charity at a reduced rate.

#### **3.1.3 Farmland bird events**

We have hosted several events throughout the year, aimed at both members and the wider community. These included a Dawn Chorus walk, a workshop on best practice management for tree sparrows, and three night safaris with an infrared camera, led by Matt Prior, who also spent a morning trapping and ringing farmland birds with local children.

### **3.2 Widespread species**

Our regular butterfly and bat walks proved as popular as ever, though number were down on the former because of the extremely hot weather.



**OBJECTIVE 4 – To offer a range of opportunities for people to engage with the landscape of the Marlborough Downs**

**OBJECTIVE 5 – To provide high quality access for all**

**OBJECTIVE 6 – To increase local and national awareness of the work, achievements and impact of the Space for Nature Project**

---

## **4.1 Marlborough Downs SfN events**

### **4.1.1 Public events**

Our events co-ordinator, Janinka Diverio, has proved to be a great success and has curated and executed our exciting and broad programme of events highlighting nature, farming, wellness and the arts whilst making Space for Nature. The programme has thus far proved very successful and has been well-supported by the local community – full details at Annex 1.

In addition to public and special interest events, the programme has delivered four volunteer workshops, one with Arval Car Leasing staff and Buglife (habitat for pollinators), one with friends of the partnership (welcome to Ukrainian refugees), and two with Action for the River Kennet volunteers (installation of kissing gate and finger post, and shrub planting at the wetland complex). Member Jilly Carter has also hosted visits to the Space for Nature Reserve by residents of a local care home.

### **4.1.2 Space for Nature WILD**

In January 2023 we launched a new venture - Space for Nature WILD. This is a monthly forest school hosted at Weir Farm and offers themed morning sessions with a whole range of activities aimed at children aged six years and over.

## **4.2 Access improvements**

As has been mentioned (section 2.2.3), a new wetland complex has been created in a publicly accessible area. As well as having access to the site, people can find out more about the River Kennet and its flora and fauna from a newly installed information panel. In addition, a new kissing gate and finger post have been put in by volunteers at the point where the footpath to the wetland site starts from a local parking area.

### **4.3 Outreach**

Janinka has been very active on our behalf on social media, and we now have over 3,200 followers on Facebook and 1,000 on Instagram. She also distributed Space for Nature 2023 calendars featuring wildlife photographs of the Downs by local farmer and group member David White.

### **4.4 Partnership working**

As has been mentioned, we have started to build relationships with other local organisations after the hiatus in activities necessitated by Covid restrictions. We have particularly strong ties to Action for the River Kennet, the Woodland Trust, Farming in Protected Landscapes and the North Wessex Downs AONB, Buglife, Arval Car Leasing, the Centre for Ecology and Hydrology, and Wiltshire Ornithological Society.

## **8. Progress Planned for future Years**

As has been stated, although we have activities and events planned for the first half of the year 2023-24, the board intends to undertake a full review of the future of the partnership and project, to include

- Organisational structure
- Governance documents
- Project aims and objectives
- Day-to-day project management
- Funding

Members will be asked to contribute their opinions and aspirations, and to actively re-engage with the partnership.

## Board Statement

This report has been prepared in accordance with the Statement of Recommended Practice: Accounting and Reporting by Charities (issued March 2005). In preparing this report, the Trustees have taken advantage of the small companies exemptions provided by section 419 (2) of the Companies Act 2006.

It was approved by the trustee board on 2<sup>nd</sup> November 2023.

Signed: \_\_\_\_\_

A handwritten signature in black ink, appearing to read 'C. Musgrave', written over a horizontal line.

Christopher Musgrave

Chair

Date: 2<sup>nd</sup> November 2023

# Independent Examiner's report to the Trustees of The Marlborough Downs Nature Enhancement Farming Ltd

(A Company limited by guarantee)

I report on the accounts of the company for the year ended 31st March 2023, which are set out on the following pages.

## Respective responsibilities of trustees and examiner

The trustees (who are also the directors of the company for the purposes of company law) are responsible for the preparation of the accounts in accordance with the requirements of the Companies Act 2006. The charity's trustees consider that an audit is not required for this year under part 16 of the 2006 Act and that an independent examination is needed.

Having satisfied myself that the charity is not subject to audit under Part 16 of the Companies Act 2006 and is eligible for independent examination, it is my responsibility to:

- examine the accounts under section 145 of the Act;
- to follow the procedures laid down in the General Directions given by the Charity Commission under section 145(5)(b) of the Charities Act; and
- to state whether particular matters have come to my attention.

## Basis of independent examiner's report

My examination was carried out in accordance with the General Directions given by the Charity Commission. An examination includes a review of the accounting records kept by the charity and a comparison of the accounts presented with those records. It also includes consideration of any unusual items or disclosures in the accounts, and the seeking of explanations from you as trustees concerning any such matters. The procedures undertaken do not provide all the evidence that would be required in an audit and, consequently, no opinion is given as to whether the accounts present a 'true and fair view' and the report is limited to those matters set out in the statement below.

## Independent examiner's statement

In connection with my examination, no material matters have come to my attention which gives me cause to believe that in, any material respect:

- accounting records are not kept in accordance with section 386 of the Companies Act 2006; or
- the accounts do not accord with such records; or
- the accounts do not comply with relevant accounting requirements under section 396 of the Companies Act 2006 other than any requirement that the accounts give a "true and fair" view which is not a matter considered as part of an independent examination; or
- the accounts have not been prepared in accordance with the Charities SORP (Statement of Recommended Practice), FRS102.

I have no concerns and have come across no other matters in connection with the examination to which attention should be drawn in this report in order to enable proper understanding of the accounts to be reached.

Signed: H. Frost

Helen Frost  
HF Bookkeeping Plus  
21 Farm Lane  
Aldbourn  
Marlborough  
Wiltshire SN8 2DS

Date: 6/12/2023

**THE MARLBOROUGH DOWNS NATURE ENHANCEMENT  
FARMING LIMITED**

**STATEMENT OF FINANCIAL ACTIVITIES  
INCLUDING INCOME AND EXPENDITURE ACCOUNT  
*FOR THE YEAR ENDED 31 MARCH 2023***

|   | Notes | Unrestricted<br>funds<br>2023<br>£ | Restricted<br>funds<br>2023<br>£ | Total<br>2023<br>£ | Total<br>2022<br>£ |
|---|-------|------------------------------------|----------------------------------|--------------------|--------------------|
| <b><u>Income from:</u></b>  |       |                                    |                                  |                    |                    |
| Donations and legacies  | 3     | 5,214                              | 15,098                           | 20,313             | 29,799             |
| Charitable activities   | 4     | 5,076                              | 288                              | 5,364              | 1,772              |
| <b>Total income</b>   |       | <b>10,290</b>                      | <b>15,386</b>                    | <b>25,677</b>      | <b>31,571</b>      |
| <b><u>Expenditure on:</u></b>   |       |                                    |                                  |                    |                    |
| Raising funds   | 5     | 605                                | -                                | 605                | 1,935              |
| Charitable activities   | 6     | 10,898                             | 21,915                           | 32,813             | 12,438             |
| <b>Total resources expended</b>                                       |       | <b>11,503</b>                      | <b>21,915</b>                    | <b>33,419</b>      | <b>14,373</b>      |
| <b>Net income/expenditure for the year/<br/>Net movement in funds</b> |       | <b>(1,213)</b>                     | <b>(6,529)</b>                   | <b>(7,742)</b>     | <b>17,198</b>      |
| Fund balances at 1 April  |       | 3,270                              | 46,106                           | 49,376             | 32,178             |
| <b>Fund balances at 31 March</b>                                      |       | <b>2,057</b>                       | <b>39,577</b>                    | <b>41,634</b>      | <b>49,376</b>      |

The statement of financial activities includes all gains and losses recognised in the year.

All income and expenditure derive from continuing activities.

The statement of financial activities also complies with the requirements for an income and expenditure account under the Companies Act 2006.

**THE MARLBOROUGH DOWNS NATURE ENHANCEMENT  
FARMING LIMITED**

**BALANCE SHEET**

*AS AT 31 MARCH 2023*

|   | Notes | 2023          |               | 2022          |               |
|---|-------|---------------|---------------|---------------|---------------|
|   |       | £             | £             | £             | £             |
| <b>Current assets</b>                                 |       |               |               |               |               |
| Debtors   |       | 7,070         |               | 1,050         |               |
| Cash at bank and in hand                              |       | <u>36,917</u> |               | <u>52,507</u> |               |
|   |       |               | 43,987        |               | 53,557        |
| <b>Creditors: amounts falling due within one year</b> |       |               |               |               |               |
|   | 10    | <u>2,353</u>  |               | <u>4,180</u>  |               |
| Net current assets                                    |       |               | <u>41,634</u> |               | <u>49,376</u> |
| <b>Income funds</b>                                   |       |               |               |               |               |
| Restricted funds                                      |       |               | 39,577        |               | 46,106        |
| Unrestricted funds                                    |       |               | <u>2,057</u>  |               | <u>3,270</u>  |
|   |       |               | <u>41,634</u> |               | <u>49,376</u> |

The company is entitled to the exemption from the audit requirement contained in section 477 of the Companies Act 2006, for the year ended 31 March 2023.

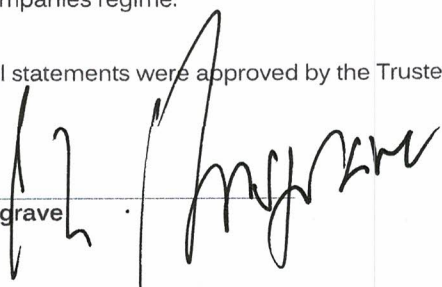
The directors acknowledge their responsibilities for ensuring that the charity keeps accounting records which comply with section 386 of the Act and for preparing financial statements which give a true and fair view of the state of affairs of the company as at the end of the financial year and of its incoming resources and application of resources, including its income and expenditure, for the financial year in accordance with the requirements of sections 394 and 395 and which otherwise comply with the requirements of the Companies Act 2006 relating to financial statements, so far as applicable to the company.

The members have not required the company to obtain an audit of its financial statements for the year in question in accordance with section 476. However, the accounts have been reviewed by the independent examiner and, separately and independently, compliance checked before submission to Companies House and the Charities Commission.

These financial statements have been prepared in accordance with the provisions applicable to companies subject the the small companies regime.

The financial statements were approved by the Trustees on 2nd November 2023.

Mr C B Musgrave  
Trustee



Company Registration No. 07907437



# THE MARLBOROUGH DOWNS NATURE ENHANCEMENT FARMING LIMITED

## NOTES TO THE FINANCIAL STATEMENTS

*AS AT 31 MARCH 2023*

---

### 1 Accounting policies

#### Charity information

The Marlborough Downs Nature Enhancement Farming Limited is a private company limited by guarantee incorporated in England and Wales. The registered office is Jindabyne, Great Hinton, Trowbridge, Wiltshire, BA14 6BT.

#### 1.1 Accounting convention

The financial statements have been prepared in accordance with the Marlborough Downs Nature Enhancement Farming Ltd ("the company")'s Articles of Association, the Companies Act 2006 and "Accounting and Reporting by Charities: Statement of Recommended Practice applicable to charities preparing their accounts in accordance with the Financial Reporting Standard applicable in the UK and Republic of Ireland (FRS 102)" (as amended for accounting periods commencing from 1 January 2016). The is a Public Benefit Entity as defined by FRS 102.

The company has taken advantage of the provisions in the SORP for charities applying FRS 102 Update Bulletin 1 not to prepare a Statement of Cash Flows.

The financial statements are prepared in sterling, which is the functional currency of the company. Monetary amounts in these financial statements are rounded to the nearest £.

The financial statements have been prepared under the historical cost convention, modified to include the revaluation of freehold properties and to include investment properties and certain financial instruments at fair value. The principal accounting policies adopted are set out below.

#### 1.2 Going concern

At the time of approving the financial statements, the trustees have a reasonable expectation that the company has adequate resources to continue in operational existence for the foreseeable future. Thus the trustees continue to adopt the going concern basis of accounting in preparing the financial statements.

#### 1.3 Charitable funds

Unrestricted funds are available for use at the discretion of the trustees in furtherance of their charitable objectives unless the funds have been designated for other purposes.

Restricted funds are subject to specific conditions by donors as to how they may be used. The purposes and uses of the restricted funds are as follows:

| Restricted fund  | Purposes                   | Uses in 2022/23  |
|------------------|----------------------------|--|
| Kilcreggan Trust | Creation of nature reserve | Livestock field shelter; woodland management; event resources; wildflower seed and establishment costs |
|                  | Farmland bird project      | None   |

| Restricted fund                 | Purposes  | Uses in 2022/23  |
|---------------------------------|---|--|
| Bybrook Trust                   | Conservation agriculture                        | Soil health training, monitoring and evaluation; best practice workshops |
| Farming in Protected Landscapes | Public event programme<br>Access infrastructure | Community events and outreach<br>Kissing gate                            |
| Other restricted                | Winter bird seed                                | None   |

#### 1.4 Incoming resources

Income is recognised when the company is legally entitled to it after any performance conditions have been met, the amounts can be measured reliably, and it is probable that income will be received.

Cash donations are recognised on receipt. Other donations are recognised once the company has been notified of the donation, unless performance conditions require deferral of the amount. Income tax recoverable in relation to donations received under Gift Aid or deeds of covenant is recognised at the time of the donation.

Turnover is measured at the fair value of the consideration received or receivable and represents amounts receivable for goods and services provided in the normal course of business.

#### 1.5 Resources expended

Liabilities are recognised as soon as there is a legal or constructive obligation committing the company to pay out resources.

This includes £415 for accounts preparation and examination. There are no costs for governance or trustee meetings or constitutional matters.

#### 1.6 Cash and cash equivalents

Cash and cash equivalents include cash in hand, deposits held at call with banks, other short-term liquid investments with original maturities of three months or less, and bank overdrafts. Bank overdrafts are shown within borrowings in current liabilities.

#### 1.7 Financial instruments

The company has elected to apply the provisions of Section 11 'Basic Financial Instruments' and Section 12 'Other Financial Instruments Issues' of FRS 102 to all of its financial instruments.

Financial instruments are recognised in the company's balance sheet when the company becomes party to the contractual provisions of the instrument.

Financial assets and liabilities are offset, with the net amounts presented in the financial statements, when there is a legally enforceable right to set off the recognised amounts and there is an intention to settle on a net basis or to realise the asset and settle the liability simultaneously.

##### *Basic financial assets*

Basic financial assets, which include debtors and cash and bank balances, are initially measured at transaction price including transaction costs and are subsequently carried at amortised cost using the effective interest method unless the arrangement constitutes a financing transaction, where the transaction is measured at the present value of the future receipts discounted at a market rate of interest. Financial assets classified as receivable within one year are not amortised.

##### *Basic financial liabilities*

Basic financial liabilities, including creditors and bank loans are initially recognised at transaction price unless the arrangement constitutes a financing transaction, where the debt instrument is measured at the present value of the future payments discounted at a market rate of interest. Financial liabilities classified as payable

within one year are not amortised.

Debt instruments are subsequently carried at amortised cost, using the effective interest rate method.

Trade creditors are obligations to pay for goods or services that have been acquired in the ordinary course of operations from suppliers. Amounts payable are classified as current liabilities if payment is due within one year or less. If not, they are presented as non-current liabilities. Trade creditors are recognised initially at transaction price and subsequently measured at amortised cost using the effective interest method.

*Derecognition of financial liabilities*

Financial liabilities are derecognised when the company's contractual obligations expire or are discharged or cancelled.

**2 Critical accounting estimates and judgements**

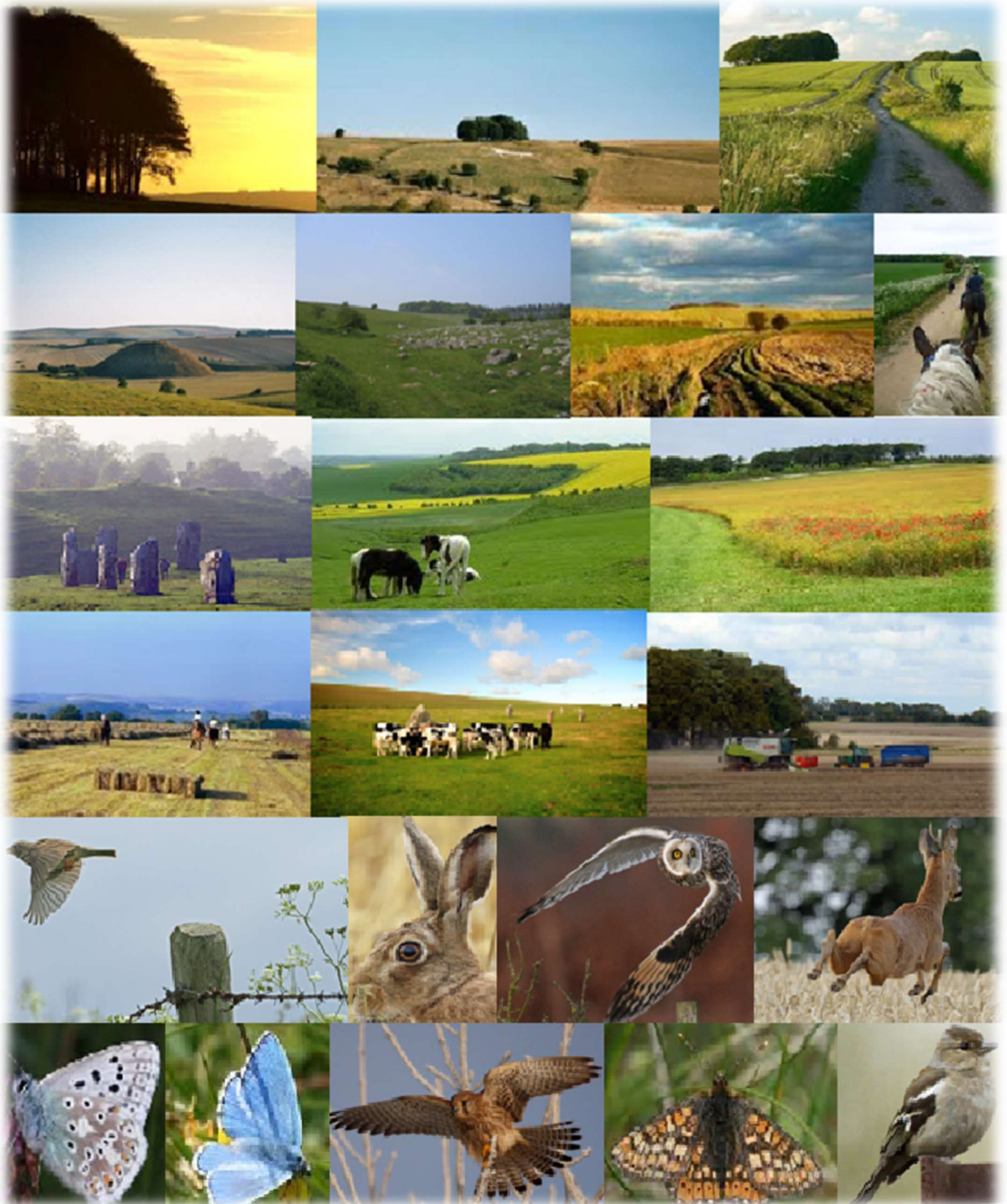
In the application of the company's accounting policies, the trustees are required to make judgements, estimates and assumptions about the carrying amount of assets and liabilities that are not readily apparent from other sources. The estimates and associated assumptions are based on historical experience and other factors that are considered to be relevant. Actual results may differ from these estimates.

The estimates and underlying assumptions are reviewed on an ongoing basis. Revisions to accounting estimates are recognised in the period in which the estimate is revised where the revision affects only that period, or in the period of the revision and future periods where the revision affects both current and future periods.

|          |                                    |                               |                             |                          |                      |
|----------|------------------------------------|-------------------------------|-----------------------------|--------------------------|----------------------|
| <b>3</b> | <b>Donations and legacies</b>      | <b>Unrestricted<br/>funds</b> | <b>Restricted<br/>funds</b> | <b>Total</b>             | <b>Total</b>         |
|          |                                    | <b>2023</b>                   | <b>2023</b>                 | <b>2023</b>              | <b>2022</b>          |
|          |                                    | <b>£</b>                      | <b>£</b>                    | <b>£</b>                 | <b>£</b>             |
|          | Donations and gifts                | 5,214                         | 360                         | 5,574                    | 29,799               |
|          |                                    | <u>5,214</u>                  | <u>360</u>                  | <u>5,574</u>             | <u>29,799</u>        |
|          |                                    | <u><u>5,214</u></u>           | <u><u>360</u></u>           | <u><u>5,574</u></u>      | <u><u>29,799</u></u> |
| <b>4</b> | <b>Charitable activities</b>       | <b>Charitable income</b>      |                             | <b>Charitable income</b> |                      |
|          |                                    | <b>2023</b>                   |                             | <b>2022</b>              |                      |
|          |                                    | <b>£</b>                      |                             | <b>£</b>                 |                      |
|          | Sales within charitable activities | -                             |                             | -                        |                      |
|          | Grants                             | 14,738                        |                             | 1,050                    |                      |
|          | Other income                       | 5,364                         |                             | 722                      |                      |
|          |                                    | <u>20,103</u>                 |                             | <u>1,772</u>             |                      |
|          |                                    | <u><u>20,103</u></u>          |                             | <u><u>1,772</u></u>      |                      |
| <b>5</b> | <b>Raising funds</b>               | <b>Unrestricted<br/>funds</b> | <b>Restricted<br/>funds</b> | <b>Total</b>             | <b>Total</b>         |
|          |                                    | <b>2023</b>                   | <b>2023</b>                 | <b>2023</b>              | <b>2022</b>          |
|          |                                    | <b>£</b>                      | <b>£</b>                    | <b>£</b>                 | <b>£</b>             |
|          | Fundraising costs                  | 605                           | -                           | 605                      | 1,935                |
|          |                                    | <u>605</u>                    | <u>-</u>                    | <u>605</u>               | <u>1,935</u>         |
|          |                                    | <u><u>605</u></u>             | <u><u>-</u></u>             | <u><u>605</u></u>        | <u><u>1,935</u></u>  |

| 6  | Charitable activities   | Charitable expenditure | Charitable expenditure |
|----|---|------------------------|------------------------|
|    |   | 2023                   | 2022                   |
|    |   | £                      | £                      |
|    | Habitat creation/management   | 3,076                  | 1,926                  |
|    | Farmland bird programme   | -                      | 492                    |
|    | Community events  | 15,347                 | 710                    |
|    | Workshops   | 3,111                  | 540                    |
|    | Access infrastructure   | 290                    | -                      |
|    | Outreach/promotion/printing   | 1,124                  | 102                    |
|    | Bank charges  | 490                    | 1                      |
|    | Insurance   | 389                    | 86                     |
|    | Office expenses   | 93                     | 48                     |
|    | Meeting expenses  | 69                     | 31                     |
|    | Employee travel   | 524                    | 163                    |
|    |   | <u>24,514</u>          | <u>4,099</u>           |
|    | Share of governance costs (see note 7)  | 8,299                  | 8,339                  |
|    |   | <u>32,813</u>          | <u>12,438</u>          |
|    | <b>Analysis by fund</b>   |                        |                        |
|    | Unrestricted funds  | 10,898                 | 8,385                  |
|    | Restricted funds  | 21,915                 | 4,053                  |
|    |   | <u>32,813</u>          | <u>12,438</u>          |
|    |   | <u><u>32,813</u></u>   | <u><u>12,438</u></u>   |
|    |   |                        |                        |
| 7  | Support costs   | Governance costs       | Governance costs       |
|    |   | 2023                   | 2022                   |
|    |   | £                      | £                      |
|    | Legal and professional  | 7,884                  | 7,394                  |
|    | Accountancy   | 415                    | 945                    |
|    |   | <u>8,299</u>           | <u>8,339</u>           |
|    | <b>Analysis by fund</b>   |                        |                        |
|    | Unrestricted funds  | 7281                   | 6,769                  |
|    | Restricted funds  | 1019                   | 1,570                  |
|    |   | <u>8,299</u>           | <u>8,339</u>           |
|    |   | <u><u>8,299</u></u>    | <u><u>8,339</u></u>    |
|    |   |                        |                        |
| 8  | Trustees  |                        |                        |
|    | None of the trustees (or any persons connected with them) received any remuneration or benefits from the company during the year. |                        |                        |
| 9  | Employees   |                        |                        |
|    | There were no employees during the year.  |                        |                        |
| 10 | Creditors   | 2023                   | 2022                   |
|    | <b>Amounts falling due within one year:</b>   | £                      | £                      |
|    | Trade creditors   | 2,353                  | 4,180                  |

# Annex 1: The Marlborough Downs Space for Nature 2022-23 Public Event Reports



## Marlborough Downs Space for Nature Event Report

|                                 |  |
|---------------------------------|--|
| <b>Event name:</b>              | Bird Feeder Crafts   |
| <b>Event date:</b>              | 21st April 2022, 10am to noon  |
| <b>Event host:</b>              | Vicki Lowes, Fiddlers Hill   |
| <b>Event lead:</b>              | Janinka Diverio, Vicki Lowes and Jemma Batten (all MDSfN)  |
| <b>Attendees:</b>               | 20   |
| <b>Overview:</b>                | Lovely drop-in event held at Vicki Lowes house. Families made a variety of different feeders from cardboard plant pots, wire, skewers and bird seed. Vicki and Jemma also took families for a walk to visit the fowl and pond and talk about the wildlife in the area. |
| <b>Feedback and evaluation:</b> | Very positive. MDSfN's first event post Covid.   |





## Marlborough Downs Space for Nature Event Report

|                                 |   |
|---------------------------------|---|
| <b>Event name:</b>              | Dawn Chorus Walk  |
| <b>Event date:</b>              | 1st May 2022, 5:30 to 8:00 am   |
| <b>Event host:</b>              | David White, Manor Farm, Berwick Bassett  |
| <b>Event lead:</b>              | Robin Nelson; Helen Llewellyn and Nigel Pleass (Wiltshire Ornithological Society)   |
| <b>Attendees:</b>               | 36  |
| <b>Overview:</b>                | David held a very successful dawn Chorus event and provided breakfast too. The event was over-attended with a surplus of 8 people which shows the demand. The group split in three, each with an expert bird-watcher and learnt how to identify different species by sight and song, and found out something of their habits.   |
| <b>Feedback and evaluation:</b> | <p>Very positive. Unfortunately there was a binocular mix up and David's went missing.</p> <p><i>Many thanks for a wonderful morning today. Well worth getting up early.</i></p> <p><i>Must thank David and wife for sharing their home for a lovely surprise breakfast too.</i></p> <p><i>Keep up the conservation, it's certainly paying off on the Marlborough Downs.</i></p> <p><i>Best wishes</i><br/><i>Kelvyn and Anna Shantry</i></p> |



## Marlborough Downs Space for Nature Event Report

|                                 |  |
|---------------------------------|--|
| <b>Event name:</b>              | Open Farm Sunday   |
| <b>Event date:</b>              | 12th June 2022, 11am to 4pm  |
| <b>Event host:</b>              | East Farm, Winterbourne Monkton  |
| <b>Event lead:</b>              | Laura Corbett and Janinka Diverio  |
| <b>Attendees:</b>               | 500+   |
| <b>Overview:</b>                | <p>The event was very successful indeed in excess of 500 people attending. The Cooper family were the hosts and the location worked extremely well offering easy parking, visits to the goats, tractor rides and a pets corner to include dog walking, chicks, sheep shearing and ponies.</p> <p>There was also a free play area of hay bale stack and exhibitors, including Wiltshire Ornithological Society and the National Trust, as well as demonstrations of sheep shearing, spinning and weaving.</p> |
| <b>Feedback and evaluation:</b> | <p>Feedback was generally very positive. Please see the link herewith. The organisers felt the staggered ticket system worked particularly well enabling a quality event with no queuing or crowds.</p> <p>Note: Mics needed for tractor rides.</p> <p>Visitor feedback and survey results are filed and can be provided.</p>  |





## Marlborough Downs Space for Nature Event Report

|                                 |   |
|---------------------------------|---|
| <b>Event name:</b>              | Summer Farm Walk  |
| <b>Event date:</b>              | 24th June 2022, 6:30 to 8:30 pm   |
| <b>Event host:</b>              | Adrian Bowles, Parsonage Farm   |
| <b>Event lead:</b>              | Adrian Bowles and Jemma Batten  |
| <b>Attendees:</b>               | 34  |
| <b>Overview:</b>                | A lovely walk on a semi-natural habitat near Chiseldon. Adrian and Jemma took us on a walk and talk through the valley demonstrating how nature was reclaiming the site with minimum intervention. We covered the different start points of the various areas of the site (arable, pasture), the plants and trees that were colonising, the management principles, and the traditional breeds of livestock being used to graze the site. The evening ended with a picnic. |
| <b>Feedback and evaluation:</b> | Very positive but as it was such a large group it was hard to hear what was being said from the back. We would need to remedy this moving forward. The weather just about held out but the picnic was dampened by drizzle.  |




## Marlborough Downs Space for Nature Event Report

|                                 |   |
|---------------------------------|---|
| <b>Event name:</b>              | Arval Volunteer Event   |
| <b>Event date:</b>              | 12th July 2022, 1:30 to 3:30 pm   |
| <b>Event host:</b>              | Jilly Carter, Maisey Farm   |
| <b>Event lead:</b>              | Kaitlyn Elverson ( <i>Buglife</i> )   |
| <b>Attendees:</b>               | 26  |
| <b>Overview:</b>                | <p>We were very lucky to be joined by a lovely bunch of volunteers from Arval, a car leasing firm in Swindon. Organised through <i>Buglife</i>, The Invertebrate Conservation Trust, we ascended on Maisey Farm like intrepid explorers for a couple of hours of survey work, with a practical task to end. Volunteers were asked to take part in a FIT count survey led by Kaitlyn. We firstly assessed the newly-established wildflower meadow of the lower slopes of this farm near Rockley and then the chalk grassland on the bank before surveying a third site of herbal ley. To end, volunteers assisted with the removal of 115 spiral guards on a patch of roadside land where we have planted hazel, blackthorn, rowan, lime, chestnut and wild privet with five minutes to spare for an impromptu drop-in talk about our nesting birds from our farmland bird guru Matt Prior, who just happened to be passing through.</p> <p>We had a lovely time examining these areas and recording the wildlife observed. Thanks to Arval for their help...many hands make for light work, to <i>Buglife</i> for partnering with us and our hostess Jilly Carter. It was a lovely afternoon.</p> |
| <b>Feedback and evaluation:</b> | Very positive.  |



## Marlborough Downs Space for Nature Event Report

|  |   |
|--|---|
| <b>Event name:</b>   | Butterfly Walk  |
| <b>Event date:</b>   | 16th July 2022, 11:00 am to 1:00 pm   |
| <b>Event host:</b>   | Jilly Carter, Space for Nature Reserve  |
| <b>Event lead:</b>   | Maurice Avent (Butterfly Conservation Trust)  |
| <b>Attendees:</b>  | 18  |
| <b>Overview:</b>   | <p>The evening before, Maurice had set a moth trap so we started the session by looking at and identifying the various specimens captured - 30 different species in total. Maurice then led a walk around the Space for Nature Reserve and adjacent field, searching for butterflies along the way, discussing identifying features and other interesting facts.</p> <p>We also stopped off at a barn where a resident owl and chicks are currently resident which was a real bonus.</p>  |
| <b>Feedback and evaluation:</b>  | <p>Feedback was very positive. The weather on the day was very hot, so whilst 34 were booked only 18 attended. This was followed up and the feedback was mixed from it being too hot to attend, to people saying they didn't think it would be on. This is disappointing but given the demographic that this type of event attracts, it's possible that they aren't so au-fait in using technology to cancel at short notice. As with all walk and talk events the group did get divided, though those at the back seemed content to chit chat and enjoyed the scenery. One child attended.</p> |
|  |   |

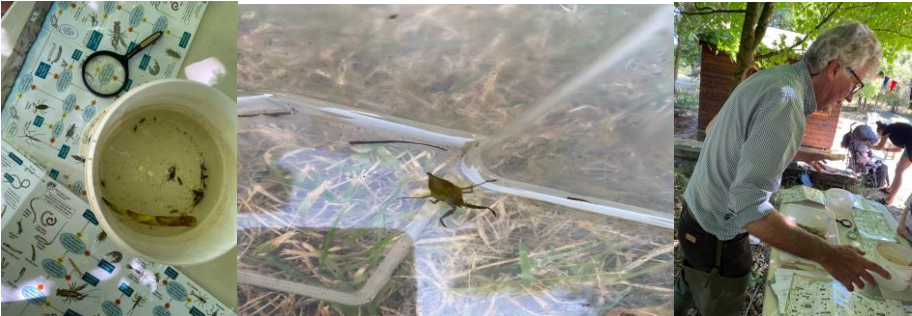


## Marlborough Downs Space for Nature Event Report


|                                 |   |
|---------------------------------|---|
| <b>Event name:</b>              | Shoebox Farms   |
| <b>Event date:</b>              | 2nd August 2022, 10:00 am to noon   |
| <b>Event host:</b>              | John White, Overtown Farm   |
| <b>Event lead:</b>              | Janinka Diverio   |
| <b>Attendees:</b>               | 21  |
| <b>Overview:</b>                | Making miniature farms inside a shoebox. Using an array of materials provided, the children imagined and crafted their very own farm thinking about shelter, food, water and safety when fashioning their miniature worlds.   |
| <b>Feedback and evaluation:</b> | <p>Facebook reach: 1026</p> <p>The mums and dad loved the event. They all said it was a great idea and the children fully embraced it. Most were from Wroughton Primary School and said a mum had shared our events to their Facebook group.</p> <p>At first I was worried about the location as it was a windy day and quite open to the elements but it was really secluded and warm in the front of the barn. I was also anxious about people finding the site but the large banner helped.</p> <p><i>“Thank you very much, it was a lovely morning”</i></p> |



## Marlborough Downs Space for Nature Event Report

|  |  |
|--|--|
| <b>Event name:</b>   | Pond Dipping   |
| <b>Event date:</b>   | 9 August 2022, 10am to noon  |
| <b>Event host:</b>   | Vicki Lowes, Fiddlers Hill   |
| <b>Event lead:</b>   | Richard Cripps (Lackham College, ret'd.)   |
| <b>Attendees:</b>  | 8 (of 28 booked)   |
| <b>Overview:</b>   | <p>A wonderful event at Vicki and Jeremy Lowes pond at Fiddlers Hill. Upon meeting, the children gathered around the water trough in the paddock and looked at Water Boatmen. The children were interested in how the boatmen would arrive here and this was discussed with Richard Cripps. Who knew they could swim and fly? We then went to the pond area where Richard waded into the pond to gather buckets and nets of specimens. The children were delighted when pond life wriggled out of the net into the specimen trays. We saw a leech, water scorpion, non biting mites and more, comparing them to the illustrations on the ID charts.</p> <p>When it all got hot and the children needed some down time we made leaping frogs and raced the ribbiting cardboard creations around the pond. Vicki supplied refreshments which were appreciated all round on such a hot day.</p> |
| <b>Feedback and evaluation:</b>  | <p>Great feedback from those who attended. Some got a bit lost finding us but the mums really appreciated something different to do and for free too. I have contacted the no-shows and replies have been mixed from I had to work to I didn't know how to contact you. Very disappointing - so from what could have been a very busy event we had a quality over quantity couple of hours really indulging our guests.</p>  |
|  |  |

## Marlborough Downs Space for Nature Event Report

|  |   |
|--|---|
| <b>Event name:</b>   | Hapa Zome Japanese Printing   |
| <b>Event date:</b>   | 16 August 2022, 10am to noon  |
| <b>Event host:</b>   | David White, Manor Farm Berwick Bassett   |
| <b>Event lead:</b>   | Janinka Diverio   |
| <b>Attendees:</b>  | 11 (19 bookings, 8 cancellations on the day)  |
| <b>Overview:</b>   | <p>Today we looked at the flora and fauna of the area surrounding Field Barn near Berwick Bassett and utilised various specimens to carry out an ancient Japanese printing practice. The families enjoyed comparing their flower finds with our flower ID charts and we talked about how the edges of the field are such an attraction for birds and insects. Using the petals and leaves of wild flowers we arranged them onto thick paper and then onto small calico bags and covered them with masking tape. We then proceeded to hammer out the pulp of the flowers which imprinted onto the canvas leaving pretty delicate floral patterns. We had a range of ages attend from one adult on her own to a family of three, the youngest being four years old.</p> |
| <b>Feedback and evaluation:</b>  | <p>Facebook reach: 932<br/>Guests were really excited to visit an off-road site and loved the activity. As it has been so dry a lot of the plants were too dry to get any printing from them but we persevere experimenting with various leaves and even wheat which produced some lovely results. I knew it would be harder at this time of year and in the future I'd like to run this event in early summer and know it would work well as an adult workshop too. I posted the event on Facebook and we have already had positive comments as a result and one email feedback <i>"Thank you for today, Matilda and Vaida really enjoyed the session"</i> - Samantha Hodgeson</p>   |
|  |   |




## Marlborough Downs Space for Nature Event Report

|                                 |   |
|---------------------------------|---|
| <b>Event name:</b>              | Wild Play at the Reserve  |
| <b>Event date:</b>              | 23 August, 10am to noon   |
| <b>Event host:</b>              | Jilly Carter, Space for Nature Reserve  |
| <b>Event lead:</b>              | Janinka Diverio   |
| <b>Attendees:</b>               | 24 (28 booked and 4 cancellations on the day)   |
| <b>Overview:</b>                | Today we held a lovely wild play session at The Reserve on Maisey Farm. Over 20 people joined us for den building, tracking and exploring. The session was intentionally loose exploring the Forest School principles of children determining their own boundaries within a monitored setting but with the freedom to engage with nature at their own pace. Much fun was had on the swing and zip-wire too and it was a great success boding well for future events of this kind. |
| <b>Feedback and evaluation:</b> | Facebook reach: 918<br><i>"We had an amazing morning, thank you"</i><br><i>"They (the children) had an amazing time, thank you"</i><br><br>Feedback was very positive. Families enjoyed a couple of hours " off the beaten track" and learned about the habitat. Host Jilly Carter gave a talk on the farm and their bio-diversity practices and plans for the future. Our cancellations were reduced for this event due to clearer cancellation policies in the reminder emails. |



## Marlborough Downs Space for Nature Event Report

|  |   |
|--|---|
| <b>Event name:</b>   | Ukrainian Tea Party   |
| <b>Event date:</b>   | 23 August, 2 to 4:30pm  |
| <b>Event host:</b>   | Jilly Carter, Space for Nature Reserve  |
| <b>Event lead:</b>   | Jilly Carter, Janinka Diverio, Jemma Batten   |
| <b>Attendees:</b>  | 51 (74 booked)  |
| <b>Overview:</b>   | <p>Hostess and idea lead of this tea party Jilly Carter, rallied a host of bakers and makers and worked with us to pull together this unforgettable event. Over 50 guests descended on The Reserve and enjoyed bushcraft, making headdresses, traditional games and an array of cakes and treats all handmade and served with tea. Lifts were organised from Marlborough and many Ukrainians met with each other for the first time, making friends with their fellow citizens and other sponsors. Jemma Batten handed out The Countryside Code leaflets too. It was a very special afternoon attracting lots of attention on social media.</p>   |
| <b>Feedback and evaluation:</b>  | <p>Facebook reach: 5,424</p> <p><i>"Thank you very much for organising this wonderful event"</i></p> <p><i>"You are Incredible, thank you hosts and assistants for a wonderful time"</i></p> <p><i>"It was really wonderful! Having the opportunity to meet all these helpful and kind hearted and nice people! Thank you, our family enjoyed the day"</i></p> <p><i>"It was lovely, thank you to all involved"</i></p> <p>Feedback has been amazing. It was quite hard pulling together the guest list and organising transport and directions but it all came together in the end. We would like to further this relationship with our Ukrainian neighbours living in the local area.</p> |
|  |   |



## Marlborough Downs Space for Nature Event Report

|                                 |   |
|---------------------------------|---|
| <b>Event name:</b>              | Wellness in the Woods   |
| <b>Event date:</b>              | 30 August, 10am to noon   |
| <b>Event host:</b>              | James Hussey, Weir Farm   |
| <b>Event lead:</b>              | Janinka Diverio and Patti Worcester   |
| <b>Attendees:</b>               | 21  |
| <b>Overview:</b>                | A beautiful event with full attendance. We were joined by Patti Worcester who took us through a journey of decorating our setting, discussing trees and leaf types. We then did some yoga poses based on trees and animals living in the woods. We then made headdresses and carried out yoga based on Indians and Indian warriors before making our own lemon and water juice with honey. We discussed bees and also our bodies (lemons are a cleanser and eating pure lemon juice is like having a shower on the inside). We then gathered in a circle and sang songs as a group. This was a really special event for all and much appreciated by all the mums. This event was held in the ancient woods of Hackpen which are burial mounds for the Bronze Age people and otherwise known locally as the hedgehogs. We also fully litter-picked the site. |
| <b>Feedback and evaluation:</b> | Wonderful feedback. One mum said it really lifted her spirits. This event offered the perfect closure for our summer sessions. Our new blackboards really helped with effectively directing people.   |



## Marlborough Downs Space for Nature Event Report

|                                 |   |
|---------------------------------|---|
| <b>Event name:</b>              | Avebury Bat Walk  |
| <b>Event date:</b>              | 7th October, 6 to 8:30pm (postponed twice)  |
| <b>Event host:</b>              | The National Trust  |
| <b>Event lead:</b>              | Ali Rasey and Peter Oliver  |
| <b>Attendees:</b>               | 33 booked - 20 attendees  |
| <b>Overview:</b>                | <p>Bat talk and walk around Avebury village and stone circle. Bat detectors loaned to attendees, batty literature handed out. Talk at the start of the walk in the car park.</p> <p>National Trust hosted by way of car parking, risk assessments, and as backmarker, very grateful for that!</p>   |
| <b>Feedback and evaluation:</b> | <p>Event had to be postponed twice because of the Queen's death and then poor weather, hence the later October date.</p> <p>Evening was dry, calm, and clear so consequently it became cold quite quickly. Bats seen/heard were:</p> <p>Common pip seen/heard by all, noctule heard by a few, serotine heard by a few. Limited numbers of bats because of air temperature/time of year.</p> <p>Attendees seemed to enjoy themselves, questions were asked and discussion had, and the walk ended after 8pm. No incidents/accidents to report.</p> <p>Two bat detectors were swapped out because of low battery power – would be worth purchasing new batteries for next year.</p> <p>Already discussed with Janinka that we'll aim for an earlier date in 2023 so it gives more scope if the walk needs postponing for whatever reason.</p> |

## Marlborough Downs Space for Nature Event Report

|                                       |   |
|---------------------------------------|---|
| <b>Event name:</b>                    | Night safari  |
| <b>Event dates:</b>                   | 24 October - Manor Farm, Avebury<br>26 October - Weir Farm, Hackpen<br>28 October - The Reserve, Rockley  |
| <b>Event hosts:</b>                   | Robin Butler<br>James Hussey<br>Jilly Carter  |
| <b>Event lead:</b>                    | Matt Prior (supported by Janinka on Mon 24 October)   |
| <b>Attendees:</b>                     | 4 per event - total 12  |
| <b>Overview:</b>                      | A night safari event exploring the stubble fields with a view to catching and ringing wild birds. Matt prior is a local bird expert. Meeting before the event Matt explained to us what he and we would be doing. The session was aimed to explore what wildlife is about and their behaviour during the night made possible with a thermal imaging camera and app on a phone (so guests could see in detail what Matt was doing up ahead).   |
| <b>Feedback and evaluation:</b>       | <p>We were hugely successful in viewing and ringing the following birds:<br/> 1 corn bunting<br/> 1 fieldfair<br/> 1 red wing<br/> 3 grey partridges<br/> 8 skylarks</p> <p>It was a long cold session of 4.5 hours in total but much enjoyed by all as we walked a field in Avebury Trusloe, caught and processed the above birds.</p> <p>Feedback from the group was great and positive in spite of the cold and wind. The app didn't work very well and kept buffering and the vision was blurry and grainy so I don't think it added a lot. An ipad would have provided a larger screen to view but the picture quality wouldn't have improved. It didn't matter though as everyone was engaged and enthusiastic in watching what was happening in real time. Matt was never more than a few metres ahead of us.</p> <p>It was a fantastic event and Matt really is an asset to this project.</p> <p>Night #2:<br/> Report from Matt Prior<br/> Last night went well. We saw 2 Woodcock but did not catch them. We ringed 7 Skylarks and 2 Fieldfares. We saw hares, rabbits, mice and a fox. Plus the guests saw several shooting stars.</p> <p>Night #3:<br/> Report from Jilly Cooper<br/> Tawny owl, Skylarks, Conr Buntings, Fieldfares, Redwing, Partridge<br/> Roe Deer, Hares, Rabbit, Field Mouse, Harvest Mouse</p> |
| <b>Post event social media reach:</b> | Facebook event report: 1205 + Video 363 with 114 views<br>Insta story:49 / 58 / 45 Post: 32 + video 220   |

## Marlborough Downs Space for Nature Event Report





## Marlborough Downs Space for Nature Event Report

|                                 |   |
|---------------------------------|---|
| <b>Event name:</b>              | Hibernation and Migration Family Event  |
| <b>Event date:</b>              | 27 October, 10am to 12:30pm   |
| <b>Event host:</b>              | Jilly Carter, Space for Nature Reserve  |
| <b>Event lead:</b>              | Janinka Diverio and Jemma Batten  |
| <b>Attendees:</b>               | Booked: 30 Cancelled: 4 No shows: 9 Additions: 6  |
| <b>Overview:</b>                | <p>A hibernation and migration themed family event with discussion and activities centred around these seasonal topics. Jemma Batten led the talks whilst Janinka led the activities and Jilly Carter also discussed the Reserve and its purpose. We started by building dens to demonstrate that animals too need homes and in this case winter homes to nestle in over the winter. Jemma Batten discussed which animals might emigrate to warmer climates and what happens to bugs and insects at this time of year and why this important food source dries up over the winter.</p> <p>We then looked at various man-made homes that one can buy to put up in their own gardens and passed these around including hedgehog homes, bat and insect boxes. The families then placed two hedgehog boxes along the hedge line. Jemma discussed how to position facing away from running water and gusty winds. Our final activity was making clay hedgehogs with the children finding cones and sticks to either sculpt or decorate their hedgehogs with. We then finished by toasting marshmallows on the open fire.</p> |
| <b>Feedback and evaluation:</b> | Feedback was very positive. The children learned a lot and easily through play and activities. The event was very well managed with a mix of fact based information and relaxed informal play.  |

### Photos:



## Marlborough Downs Space for Nature Event Report

|                                 |   |
|---------------------------------|---|
| <b>Event name:</b>              | Seasonal Crafty Fun   |
| <b>Event date:</b>              | 17 December, 11 am to 3 pm  |
| <b>Event host:</b>              | East Farm, Gourmet Goat Farm Larder   |
| <b>Event lead:</b>              | Janinka Diverio   |
| <b>Attendees:</b>               | 25  |
| <b>Overview:</b>                | <p>A drop-in session masking seasonal decorations using willow, clay, foliage, bird seed.</p> <p>An opportunity to host a drop-in session at the great facilities at East Farm with goats and Freddie the cow for company.</p> <p>Participants could choose a range of items to make from willow wreaths, clay and pinecone hedgehogs and edible tree decorations.</p> <p>We had a mix of ages attend and some repeat visitors. It was really good to engage with people on a more relaxed level.</p> |
| <b>Feedback and evaluation:</b> | <p>Lovely feedback. Some chance passers by and some who came intentionally.</p> <p><i>"My boys had a wonderful time today making crafts. Thank you"</i> - Fiona Maynard</p>   |





## Marlborough Downs Space for Nature Event Report

|                                 |   |
|---------------------------------|---|
| <b>Event name:</b>              | Willow Crafts and Dream Catchers (and journey sticks)   |
| <b>Event date:</b>              | 14 February, 10 am to noon  |
| <b>Location</b>                 | The Reserve   |
| <b>Event lead:</b>              | Janinka Diverio   |
| <b>Attendees:</b>               | 20 children and 10 adults (2 toddlers)<br>1 family no show  |
| <b>Overview:</b>                | <p>A brilliant morning, Misty, dull and damp at first but most families turned up to enjoy the session in good spirits.</p> <p>The session centred around willow crafts but as we were enjoying them we look for feathers, explored the site for decorations and even found some sheep fleece which we made bug duvets from for the bug hotel. The children made dream catchers and we discussed the reasons behind this lovely ornament. Because it was Valentines the children also made willow hearts.</p> |
| <b>Feedback and evaluation:</b> | Very positive. Some repeat guests from last summer and from SfN WILD. Some people actually booked on future events whilst they were there.  |



## Marlborough Downs Space for Nature Event Report

|                                 |   |
|---------------------------------|---|
| <b>Event name:</b>              | Bird Ringing  |
| <b>Event date:</b>              | 18 February, 7:15 to 11 am  |
| <b>Location</b>                 | Bedwyn Common   |
| <b>Event lead:</b>              | Matt Prior  |
| <b>Attendees:</b>               | 14 children with parents  |
| <b>Overview:</b> by Matt Prior  | <p>Another brilliant day yesterday. Members of Wiltshire Ornithological Society gave a bird ringing demonstration specifically for children in Savernake Forest. This is part of a commitment that I have made as Chair of WOS to encourage more youngsters into birdwatching. We had to limit numbers, and 14 children came, joined by their parents, who turned out to be just as enthralled. As it was windy we had to move the event from a lovely farm to a sheltered woodland. Thank you very much to Forestry England for allowing us to use one of their sites. We ringed a good variety of birds including Treecreepers, Nuthatch, Marsh Tit, Chaffinches, Great Spotted Woodpecker and lots of Coal Tits. The level of enthusiasm and engagement was absolutely amazing, both the small kids and big kids were completely focussed right to the end. The ringing team did a fantastic job and their hard work was made worthwhile by seeing so many happy faces.</p> <p>See page 2 for photos</p> |
| <b>Feedback and evaluation:</b> | <p>Very positive:</p> <p><i>Hi Janinka,</i></p> <p><i>Just wanted to feedback about what an amazing morning we had! Emma had such a fantastic time and learnt so much, she hasn't stopped talking about it and couldn't believe she was able to hold and release the birds! A big thank you to Matt and everyone there, they were all so interesting and knowledgeable and it made for a really memorable day. We would def be interested in any future events, em has a real passion and interest in birds and it was lovely to be amongst other children who were equally as passionate.</i></p> <p><i>Big thank you</i></p> <p><i>Alice, Steve and Emma</i></p>  |



## Marlborough Downs Space for Nature Event Report



## Marlborough Downs Space for Nature Event Report

|                                 |   |
|---------------------------------|---|
| <b>Event name:</b>              | Great British Spring Clean  |
| <b>Event date:</b>              | 12 March, 10 am to noon   |
| <b>Event host:</b>              | Hackpen carpark (The Ridgeway)  |
| <b>Event lead:</b>              | Janinka Diverio   |
| <b>Attendees:</b>               | 13 booked. 2 families cancelled. 6 people attended.   |
| <b>Income:</b>                  | N/A   |
| <b>Overview:</b>                | <p>We met at Hackpen Hill car-park and assembled, distributed litter pickers and hoops. It was an incredibly blustery and cold day hence I think the low attendance.</p> <p>We literally did the car park area, the walk to the first clump of beech trees, inside the wooded area and the length of the inside field (top) and managed to obtain 4 bags of rubbish to include over 20 glass bottles, one ball, 2 odd bots, a large plant pot and a large plastic drinking cup.</p> <p>We had lots of fun looking for yellow litter and yellow in nature which was a challenge set for us by Friends of the Ridgeway.</p> |
| <b>Feedback and evaluation:</b> | <p>Low attendance levels but a really great event with great results and good partnerships with Wilts Council (litter pickers loan), Friends of the Ridgeway (yellow spotting), National Ridgeway Trail (50th anniversary) and The Great British Spring Clean. Good new partnerships beginnings.</p> <p>Definitely worthwhile with brilliant social media post-event comments and reach.</p> <p>Families loved it and “Very satisfying” was the conclusion. One child even made a poster before she came to the event.</p>  |



# Marlborough Downs Space for Nature Event Report

