



## Moths of the Marlborough Downs



**Common footman** (above)

Foodplant:s: lichens, algae, leaves of thorn, clematis and bramble



**Herald** (above)

Foodplant:s: leaves of willow and poplars



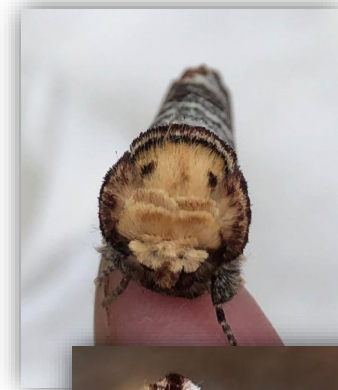
**Swallow-tailed moth** (below)

Foodplant:s: tree leaves, ivy



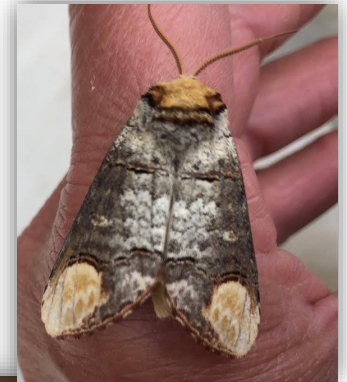
**Clouded border** (below)

Foodplant:s: leaves of poplars, willows and hazel



**Buff-tip** (right)

Foodplant:s: tree leaves



**Cinnabar** (above)

Foodplant:s: leaves and flowers of ragwort







## Moths of the Marlborough Downs



**Privet hawk-moth (above)**

Foodplant:s: leaves of privet, lilac  
and other shrubs

**Peach blossom (right)**  
Foodplant:s: bramble leaves



**Poplar hawk-moth (left)**  
Foodplant:s: leaves of  
poplars and willows

**Brimstone moth (right)**  
Foodplant:s: leaves of  
trees and shrubs



**Elephant hawk-moth (above)**

Foodplant:s: leaves of  
willowherbs, bedstraws and



**Eyed hawk-moth (above)**

Foodplant:s: leaves of apple trees,  
sometimes poplars



**Leopard moth (above)**

Foodplant:s: leaves of trees and  
shrubs